



# HARC Herald

June 2023 Newsletter



## Pride Month

June is Pride month, which is an opportunity to celebrate LGBTQIA+ communities and recognize how their unique needs may affect their engagement in home visiting. As part of HARC's mission, we recognize the importance of diversity and maintain [our commitment to improving equity](#) through home visiting, so that all populations can thrive

## In this Issue

In this issue, we spotlight an early career researcher, link you with the most recent HARC resources, invite you to join our network, highlight upcoming meetings and funding opportunities, and much more!

## Spotlight on Early Career Researcher, Bethel DeGracia



**Undergraduate, Bethel DeGracia, shares her personal public health journey, her current experience as a scholar in the Diversity Summer Internship Program (DSIP), and advice for other students interested in early career opportunities.**

**Q:** Can you tell us about yourself?

**BD:** My name is Bethel DeGracia, and I am from Grayson, Georgia! I am a rising Junior studying Public Health at Johns Hopkins where I am involved with Hopkins Community Connection, the Eritrean & Ethiopian Students Association, and the Latinx Pre-Health Honors Society (LEM). My internship, the [Diversity Summer Internship Program](#) (DSIP), gives undergraduate students of underrepresented groups the opportunity to do graduate-level research with a mentor within the School of Public Health!

**Q:** How did you become interested in Public Health research?

**BD:** My devotion to health equity and my background as the primary caretaker for my

grandparents initially sparked my interest in research. The opportunity for me to dig deep into my passions and produce scholarly work that will continue to slowly dismantle systemic oppression speaks to my values in research as it relates to Public Health and Medicine.

**Q:** What is the research focus of your internship with HARC?

**BD:** While working with Dr. Allison West and the HARC team, I am working on a scoping review on community-engaged research within home visiting. This consists of identifying the extent and nature of research-community collaborations in published early childhood home visiting research. I will be working on all aspects of the project including the search, screening, and analysis within the paper.

**Q:** What advice would you give to students looking to gain experience in the field of home visiting research?

**BD:** My advice would be to cold email professionals in the field. Though they are busy, you never know what opportunities may come by just sending a kind message!

**Q:** How did you find out about this internship?

**BD:** I found out about this experience through my summer internship, DSIP. When my Program Director, Mahnoor Ahmed, was pairing me with my project, she told me about Dr. West and her work! I am very passionate about community-level interventions within Public Health, and I love working with children and families, so working with HARC was a perfect opportunity.

## Featured HARC Resources

### Precision Home Visiting - the Precision Paradigm

To strengthen family engagement and home visiting's benefits for families, we need to answer the question: What works best, for which families, in which contexts, why, and how? HARC's [Precision Paradigm](#) provides a framework to answer these questions.



### Identifying and Exploring Emerging Practice and Policy Concerns

HARC has consistently served an important role in translating emerging issues into learning opportunities. We have done this by clarifying how policy and community issues impact front line practice; promoting and implementing studies to unpack these topics; investigating promising solutions to address key challenges; and disseminating new learning to the field. In a recent [brief](#), we highlight what we are learning and our upcoming steps in the next five years.

### From the Vault

In 2018 HARC sponsored a Methods Meeting that brought together national methods experts and home visiting experts to consider how innovative methods can be used to achieve precision home visiting. The meeting was designed to be an efficient way for attendees to learn about innovative research methods to advance precision home visiting, to consider how what is learned might be used in future work, and to connect with others whose work is helping to shape the field. Videos of presentations from this meeting are easily accessible on our new website. Visit our [website](#) to learn from

experts in single case designs, community engaged research, adaptive designs, mediation analyses, and more!

## 8th Annual Collaborative Science of Home Visiting Meeting Recordings

On May 10<sup>th</sup> HARC hosted its 8<sup>th</sup> Annual Collaborative Science of Home Visiting Meeting. Over 150 HARC members were able to join and engage with the innovative presentations. If you were unable to attend, all of the 2023 meeting recordings are now available on our new [website](#).

## Join/Re-enroll in HARC We Can't Do What We Do Without You!

At the heart of HARC's work is our **practice-based research network (PBRN)**. HARC PBRN members engage in collaborative, field-initiated studies to move home visiting forward. The PBRN is designed to bring together programs and researchers to answer questions that are critical to the field in order to broaden and strengthen home visiting's benefits for all families and communities.

Membership is FREE and anyone with an interest in home visiting can join! There are several benefits such as the ability to join special interest groups to connect with your peers and being the first to learn about findings from HARC studies.

**If you are already a HARC member, please re-enroll** by completing a short membership survey so that you can continue to receive all communications. If you are new to HARC, we also welcome you to join by completing the enrollment survey.

Join/Re-enroll in the PBRN

## Evidence-Informed Resources from the Field

### Equitable Research - PRISMA-E 2012

In the past, the lack of evidence on equity presented challenges for using systematic reviews and guidelines for health policy and practice. Too often, there was an absence of the necessary detail in reporting factors related to health equity including population and socio-demographic characteristics. In response to this problem, the Preferred Reporting Items for Systematic Reviews and Meta-Analyses (PRISMA) created an equity extension, [PRISMA-E 2012](#), which details the guidelines for equity focused reviews to help identify, extract, and synthesize evidence on equity in reviews. The [Extending the PRISMA Statement to Equity-focused Systematic Reviews \(PRISMA-E 2012\): Explanation and Elaboration](#), by Welch and colleagues is a great resource to better understand the PRISMA-E 2012, including its background and checklist examples.

### Peer-reviewed Literature Updates

Each month, HARC shares recently published peer-reviewed home visiting research

## Upcoming Conferences



### **National Maternal Health Innovation Symposium (August 2-3, 2023, in Minneapolis, MN and August 9-10, 2023, virtually)**

**Registration** is now open for the fourth annual National Maternal Health Innovation Symposium. The aim is that this symposium will become a trusted, evidence-driven, and community-centered space for maternal health professionals and others invested in the well-being of families to connect, and to advance maternal health equity.

---

### **ZERO to THREE's LEARN Conference (September 19-20, 2023, in Minneapolis, MN)**

The goal of the ZERO TO THREE **LEARN Conference** is to transform early childhood concepts into action, theories into skills and the shared passion into positive energy that propels the field forward. This conference is a great way learn from the experts in the field, build networks, and connect with friends.

---

### **Patient-Centered Outcomes Research Institute (PCORI) Annual Meeting (October 4-5, 2023, in Washington, DC)**

**Registration** is still open for the 2023 PCORI Annual Meeting. Attendees will hear from patients, caregivers, researchers, clinicians, and the broader healthcare community about patient-centered comparative clinical effectiveness research.

---

### **MIECHV All-Grantee Meeting (January 29-31, 2024, in Arlington, VA)**

HRSA's Division of Home Visiting and Early Childhood Systems announces their 2024 MIECHV All-Grantee Meeting to be held in-person next January. While the meeting will be in-person, hybrid and virtual options will also be available for additional staff at the state/territory and LIA levels to attend select sessions. More details, including an agenda and abstract submission instructions, will be shared in the coming months.

---

### **Office of Planning, Research, and Evaluation's (OPRE) Research**

## and Evaluation Conference on Self-Sufficiency (RECS) (May 29-31, 2024, in Washington, DC)

OPRE's [call for proposals](#) for the 2024 Research and Evaluation Conference on Self-Sufficiency is open. The conference will focus on programs, policies, and services that support families toward economic self-sufficiency. Presentations will feature research findings and their policy and practice implications. For more information on proposal criteria, please view the [Call for Proposals Guidelines and Submission Instructions](#). Deadline is August 14, 2023.

---

## The Administration for Children and Families' (ACF) National Research Conference on Early Childhood (NRCEC) (June 24-26, 2024, in Arlington, VA)

This [conference](#) is for anyone interested in learning about the latest research related to Early Head Start, child care, home visiting, child welfare, and other childhood programs. More information about NRCEC can be found in this [brief video](#).

## Funding Opportunities and Calls for Papers

### Institute for Home Visiting Workforce Development and Jackie Walorski Center for Evidence-Based Case Management

The Health Resources and Services Administration announces the [opportunity](#) to apply for funding for their Institute for Home Visiting Workforce Development and to establish and operate the Jackie Walorski Center for Evidence-Based Case Management. The purpose of the Institute is to provide support for home visiting programs to expand, support, and retain a diverse and qualified workforce by assessing workforce trends, and providing technical assistance. Deadline is July 14, 2023.

---



### Healthy Families Community-Based Perinatal Health Initiative

The Office of Minority Health (OMH) is seeking [applications](#) for projects funded under the Healthy Families Community-Based Perinatal Health Initiative (COPHI) to develop innovative models for integrating community-based maternal support services (COMSS) into perinatal systems of care. OMH will award up to \$10,000,000 to support up to 10 awards, ranging from \$975,000 to \$1,250,000 annually for a project period of up to four years with the possibility of an optional competitive fifth year for transition to sustainability. If you have difficulty accessing the full announcement electronically, please contact: [paul.rodriquez@hhs.gov](mailto:paul.rodriquez@hhs.gov). Deadline is July 18, 2023.

---

### The Children's Bureau is Seeking Qualified Subject-Matter Experts to Participate as Grant Peer Reviewers

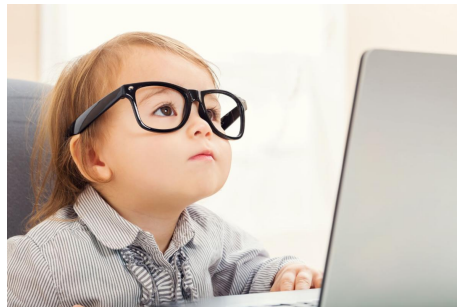
The Children's Bureau is currently recruiting grant reviewers for Notice of Funding Opportunities. Notice of Funding Opportunities include the [Tribal Court Improvement Program](#), [The National Child Welfare Workforce Institute](#), and [Trauma-Interventions for Children and Youth in Foster Care with Complex Mental, Behavioral, and Physical Health Needs](#). If you are interested in becoming a reviewer, please visit their [site](#) for more

---

## Special Issue of *Early Childhood Research Quarterly*: Equitable Access to Early Care and Education in the United States

Many families with young children lack access to early care and education (ECE) which can have long term impacts. In recognition of this, *Early Childhood Research Quarterly* is **calling for manuscripts** for their upcoming issue to advance the knowledge base on policy solutions and practices that increase equitable access to ECE from both a family and provider perspective. Deadline is August 4, 2023.

### Early Career Researcher Corner



#### Native Children's Research Exchange (NCRE) Scholars Program

The **NCRE Scholars Program** provides career support to early-stage researchers and late-stage graduate students pursuing research on substance use disorder and Native child and adolescent development. Scholars will become part of a cohort, develop research skills, collaborations, and networks during their participation in the program. Additionally, each scholar will receive tailored career support activities which are co-created by the scholar and mentor. Deadline is June 30, 2023.

#### Brazelton Touchpoints Center's (BTC) Postdoctoral Fellowship

BCT announces their **postdoctoral fellowship** in early childhood translational and applied research. Postdoctoral fellows will work with researchers to participate in research on interventions with young children and families. Several work opportunities are available to fellows such as dual-generation and early childhood programs (e.g., Early Head Start), child welfare, and home visiting research. This is an open fellowship and applications will be reviewed on a rolling basis.

***Missed a newsletter? No worries - they're now available on the HARC website!***

*Do you have research-related announcements or examples of precision research you'd like to share with the HARC network? Please bear with us as we develop guidelines for sharing and posting news from network members. Meanwhile, please feel free to send to Diana ([dchute1@jhu.edu](mailto:dchute1@jhu.edu)) and we will review on a case by case basis.*



Share This Email



Share This Email



Share This Email

Home Visiting Applied Research Collaborative | 615 N. Wolfe St E4150, Johns Hopkins  
Bloomberg School of Public Health,  
Baltimore, MD 21205

[Unsubscribe kgonsal1@mail521.jh.edu](mailto:kgonsal1@mail521.jh.edu)

[Update Profile](#) | [Constant Contact Data Notice](#)

Sent by [kgonsal1@mail521.jh.edu](mailto:kgonsal1@mail521.jh.edu) in collaboration  
with



Try email marketing for free today!