



HARC Herald

May 2023 Newsletter



HARC's Annual Collaborative Science of Home Visiting Meeting Recordings are Now Available

On May 10th HARC hosted its 8th Annual Collaborative Science of Home Visiting Meeting. Over 150 HARC members were able to join and engage with the innovative presentations. If you were unable to attend, all of the 2023 meeting recordings are now available on our new [website](#).

In this Issue

This issue features new HARC resources including a research training toolkit for home visitors, information on how to join our network, funding and training opportunities from the field, and much more!

May is Mental Health Awareness Month

Professional Well-Being

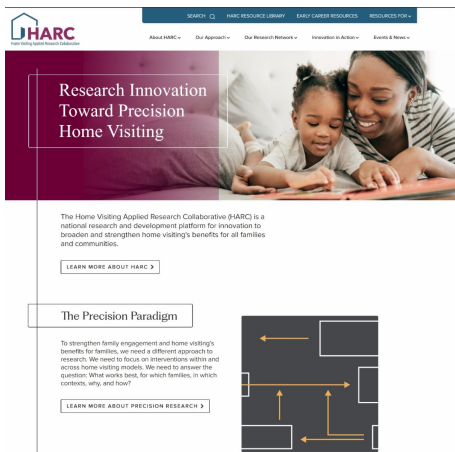
Professional well-being is essential for maintaining a thriving workforce. Recent literature reviews highlight factors at multiple levels that may compromise professional well-being for [home visiting practitioners](#) and [researchers](#), such as financial insecurity, job demands and stressors, and poor work-life balance. They also highlight factors that promote professional well-being, such as a passion for the work and relationships with coworkers and offer recommendations and resources.

Maternal Well-Being

Two pilot precision home visiting projects funded by HARC focused on using innovative methods to address maternal mental health through home visiting. The first pilot, [Development of a Trauma-Informed Approach in Home Visiting](#), examined how home visiting programs address trauma history, depression, and low social support in mothers to inform the development of intervention strategies. The second pilot, [A Pilot Study of a Sequential Multiple Assignment Randomized Trial Aimed at Reducing Depressive Symptoms Among Home Visiting Clients](#), established the feasibility and acceptability of delivering different permutations of the 'Mothers and Babies'

intervention which included the development of supplemental mindfulness content for intervention non-responders.

Featured HARC Resources



HARC's New Website is Here!

Check out our new [website](#)! The site is for everyone who has an interest in home visiting research and research findings. The new site includes information about our practice-based research network, HARC research briefs, several toolkits, resources to support precision research, information for early career scholars, and much more.

Home Visitor Research Training Toolkit

Home visitors are critical partners in home visiting (HV) research and quality improvement projects. Developed by Northwestern University with funding from the Patient Centered Outcomes Research Institute, the goal of the [Home Visitor Research Training](#) is to increase the number of home visitors who partner in research by providing guidance on research design, methods, interpretation and dissemination of findings. Increasing engagement in research will help ensure that research findings are useful to HV programs and families.

Join/Re-enroll in HARC We Can't Do What We Do Without You!

At the heart of HARC's work is our practice-based research network (PBRN). HARC PBRN members engage in collaborative, field-initiated studies to move home visiting forward. The PBRN is designed to bring together programs and researchers to answer questions that are critical to the field in order to broaden and strengthen home visiting's benefits for all families and communities.

Membership is FREE and anyone with an interest in home visiting can join! There are several benefits such as the ability to join special interest groups to connect with your peers and being the first to learn about findings from HARC studies.

If you are already a HARC member, please re-enroll in HARC by completing a short membership survey so that you can continue to receive all communications. If you are new to HARC, we also welcome you to join by completing the enrollment survey.

[Join/Re-enroll in the PBRN](#)

Evidence-Informed Resources from the Field

Peer-reviewed Literature Updates

Each month, HARC shares recently published peer-reviewed home visiting research articles. Articles were identified via a Google Scholar alert, thus the list may not include all published articles. View the citations and links to open access articles [here](#).

Upcoming Conferences

The Administration for Children and Families' (ACF) National Research Conference on Early Childhood (NRCEC) to held June 24-26, 2024

This [conference](#) is for anyone interested in learning about the latest research related to Early Head Start, child care, home visiting, child welfare, and other childhood programs. More information about NRCEC can be found in this [brief video](#).

Funding Opportunities and Calls for Papers

Center for Research on Hispanic Children and Families

The Office of Planning, Research, and Evaluation (OPRE), within the Administration for Children and Families (ACF), is soliciting applications for the Center for Research on Hispanic Children and Families (HHS-2023-ACF-OPRE-PH-0031). This 5-year cooperative agreement will fund a research center to lead and support investigation of the needs of Hispanic populations served by ACF and promising approaches to promote social and economic well-being among Hispanic children and families with low incomes. This research center will bring together an interdisciplinary team of academic, organizational, and community-based partners to provide leadership in culturally competent research that can inform policies concerning Hispanic families with low-incomes and to foster significant scholarship regarding the needs and experiences of the diverse Hispanic populations throughout the nation.



ACF is particularly interested in research examining how Hispanic populations access, experience, and benefit from ACF programs, systematic differences in those experiences, and factors associated with any differences. Applicants that have a history of research as a primary organizational activity are encouraged to apply.

The full announcement and application, including details about the deadline and contents, can be found [here](#). If you have additional questions regarding this grant announcement, please email HispanicResearch@icfi.com or call 1-877-350-5913. For further information about OPRE, see <http://acf.hhs.gov/opre>. Deadline is June 7, 2023.

Prevention Services Evaluation Partnerships: Building Evidence for Mental Health, Substance Use, In-home Parent Skill-based, and Kinship Navigator Programs and services

Sponsored by the Dept of Health and Human Services, this [grant](#) aims to support collaborations among evaluators and partnering Title IV-E agencies, community entities, and/or

other researchers to conduct evaluations of programs and services intended to provide enhanced support to children and families as well as prevent child abuse and neglect and foster care placements. [Deadline is June 11, 2023.](#)

Career Pathways Secondary Data Analysis Grants

Sponsored by the Dept of Health and Human Services, this [grant](#) will support secondary data analyses of data collected to rigorously evaluate career pathways programs. The aim is to understand how effective services funded by Temporary Assistance for Needy Families are in addressing employment and self-sufficiency. [Deadline is June 22, 2023.](#)

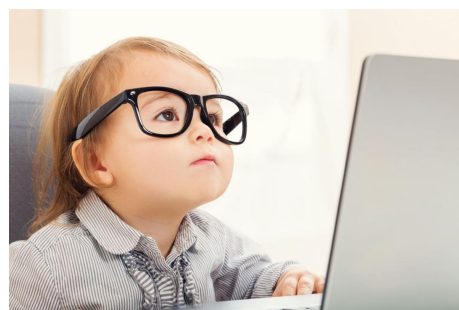
Healthy Families Community-Based Perinatal Health Initiative

The Office of Minority Health (OMH) is seeking [applications](#) for projects funded under the Healthy Families Community-Based Perinatal Health Initiative (COPHI) to develop innovative models for integrating community-based maternal support services (COMSS) into perinatal systems of care. OMH will award up to \$10,000,000 to support up to 10 awards, ranging from \$975,000 to \$1,250,000 annually for a project period of up to four years with the possibility of an optional competitive fifth year for transition to sustainability. If you have difficulty accessing the full announcement electronically, please contact: paul.rodriquez@hhs.gov. [Deadline is July 18, 2023.](#)

Special Issue of *Early Childhood Research Quarterly*: Equitable Access to Early Care and Education in the United States

Many families with young children lack access to early care and education (ECE) which can have long term impacts. In recognition of this, *Early Childhood Research Quarterly* is [calling for manuscripts](#) for their upcoming issue to advance the knowledge base on policy solutions and practices that increase equitable access to ECE from both a family and provider perspective. [Deadline is August 4, 2023.](#)

Early Career Researcher Corner



Foundation for Child Development Young Scholars Program (YSP) 2024

YSP supports scholarships for early career researchers with a focus on funding implementation research that is policy- and practice-relevant and examines various aspects of the early care and education workforce. The foundation is currently seeking applicants from underrepresented groups and scholars from various disciplines. To learn more about the program, download their [2024 YSP Guidelines](#), review the [YSP FAQs](#) and view prior [YSP webinars](#).

Native Children's Research Exchange (NCRE) Scholars Program

The [NCRE Scholars Program](#) provides career support to early-stage researchers and late-stage graduate students pursuing research on substance use disorder and Native child and adolescent development. Scholars will become part of a cohort, develop research skills, collaborations, and networks during their participation in the program. Additionally, each scholar will receive tailored career support activities which are co-created by the scholar and mentor.

Home Visiting Applied Research Collaborative www.hvresearch.org

Do you have research-related announcements or examples of precision research you'd like to share with the HARC network? Please bear with us as we develop guidelines for sharing and posting news from network members. Meanwhile, please feel free to send to Diana (dchute1@jhu.edu) and we will review on a case by case basis.



Share This Email



Share This Email



Share This Email

Home Visiting Applied Research Collaborative | 615 N. Wolfe St E4150, Johns Hopkins
Bloomberg School of Public Health,
Baltimore, MD 21205

[Unsubscribe \[kgonsal1@mail521.jh.edu\]\(mailto:kgonsal1@mail521.jh.edu\)](#)

[Update Profile](#) | [Constant Contact Data Notice](#)

Sent by kgonsal1@mail521.jh.edu in collaboration
with



Try email marketing for free today!