



HARC Herald

January 2024 Newsletter

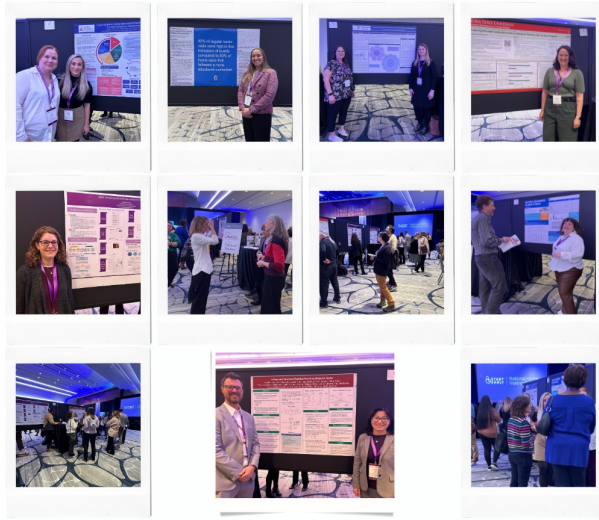
Table of Contents

- | | |
|---|-----------------------------------|
| 1. AGM and Summit Highlights | 6. Call for Papers |
| 2. 2024 HARC Annual Meeting | 7. Upcoming Webinars |
| 3. Webinar Series Kickoff | 8. Upcoming Conferences |
| 4. Monthly Peer-Reviewed Literature Updates | 9. Early Career Researcher Corner |
| 5. Call for Proposals | 10. Become a HARC member |

AGM and Summit Highlights

HARC had a great time engaging with attendees at the All-Grantee Meeting and the National Home Visiting Summit last week. HARC Leadership Team members and Coordinating Center staff led four presentations on HARC's work and enjoyed engaging with current and future HARC members at exhibit tables and the poster session. HARC's joint poster session with Start Early designated six research posters as "HARC Featured Posters" at the Summit. In alignment with our goal of advancing the careers of Early Career Scholars, HARC was able to support the travel and registration fees of early career poster presenters. All posters are available in our [Resource Library](#).





HARC's Early Career Scholars Poster Presentations
2024 National Home Visiting Summit



HARC Annual Meeting - Save the Date!

HARC's annual meeting will be held in Washinton, DC Sept 17-18th, 2024. More details will be coming soon!



9TH ANNUAL MEETING SAVE THE DATE

September 17-18, 2024
Johns Hopkins University Bloomberg Center
555 Pennsylvania Ave. Washington DC

DETAILS TO COME

www.hvresearch.org



**Register Now for the HARC Webinar Series Kickoff
February 21, 2024, from 12-1:30pm**

Building Your Career in Early Childhood Home Visiting Research

February 21st, 2024

12pm - 1:30pm ET



Ericka Lewis
School of Social Work
U. of MD Baltimore



Brenda Jones Harden
School of Social Work
Columbia University



Deborah Daro
Chapin Hall at the
University of Chicago

Register Now



www.hvresearch.org

This webinar is designed for researchers early in their research career trajectory. Students and recent graduates are welcome. Attendees will learn about career paths in applied home visiting research in academia, research firms and government agencies.

[Click Here to Register](#)

Mark your calendar for our next webinar to be held on March 7th.
[Details to come.](#)

Monthly Peer-Reviewed Literature Updates

Peer-reviewed Literature Updates

Each month, HARC shares recently published peer-reviewed home visiting research articles. Articles were identified via a Google Scholar alert, thus the list may not include all published articles. View the citations and links to open access articles [here](#).

Call for Proposals

Center for Indigenous Research Collaborations and Learning for Home Visiting (CIRCLE-HV) Research-Practice Partnership Request for Proposals (RFP)

CIRCLE-HV has released an [RFP](#) for collaborative partnerships between researchers and home visiting programs serving indigenous children and families in the U.S. and U.S. territories, which is [due on April 1, 2024](#). The center is hosting two informational webinars on this opportunity. The [first webinar](#) will be held on February 15, 2024 from 3-4:30pm ET and the [second webinar](#) will be held on March 14, 2024 from 3pm-4:30pm ET.

Call for Papers

Maternal and Child Access to Health and Healthcare

BMC Public Health is calling for submissions of rigorous research that can inform interventions and policy for their collection on [Maternal and child access to health and healthcare](#). The goal of the collection is to highlight the barriers to access to healthcare for women and children, especially among underserved populations. Deadline is April 18, 2024.



Upcoming Webinars

The Child and Family Data Archive's Webinar about the Recently Released Check-in Data from the Mother and Infant Home Visiting Program Evaluation (MIHOPE) (February 8, 2024 from 1-2pm ET)

[Registration](#) for the Child and Family Data Archive's webinar regarding recently released data from MIHOPE is now open. The webinar will provide researchers and analysts with: 1) an overview of MIHOPE and early childhood home visiting; 2) information on data collection; 3) information on accessing the data; 4) example of using MIHOPE data across waves; and 4) open forum and Q&A. This webinar will be recorded and available on the [ICPSR website](#).

Upcoming Conferences

The Administration for Children and Families' (ACF) National Research Conference on Early Childhood (NRCEC) (June 24-26, 2024, in Arlington, VA)

This three-day [conference](#) will present the latest research on Head Start, Early Head Start, child care, home visiting, child welfare, special education, pre-kindergarten, early elementary, and other early childhood programs. Registration will open in the Spring of 2024.

For more information on upcoming conferences, please visit HARC's [Upcoming Conferences and Webinars page](#)!

Early Career Researcher Corner



HRSA Pathways - Student Trainee Medical/Health PD 20R161/20R162

HRSA's Pathways include a set of three programs that enable the Federal government to hire individuals in the early stages of their career and offers opportunities to work in agencies and explore Federal careers while still in school and while getting paid for the work performed. For more information, visit [USAJOBS](#). Deadline is February 12, 2024.

Robert Wood Johnson Foundation's Health Policy Research Scholars (HPRS)

Applications are now open for the HPRS program, a four-year national leadership development program for full-time doctoral students. It is designed for students who are committed to ensuring their research is aligned with the health needs of communities. The program provides training in health policy, how to think strategically, and how to craft an actionable research question that can inform solutions to advance health equity—as well as mentorship, career, and leadership coaching. Deadline is March 7, 2024.

Postdoctoral Fellowship in Infant Mental Health Prevention Science

The University of Maryland School of Social Work is accepting **applications** for a postdoctoral fellow in infant mental health prevention science for a minimum of two years starting on or before July 1, 2024. This position will provide broad, cross-disciplinary exposure along with deep involvement in an array of mentored and independent activities that will promote early career development. Applications considered on a rolling basis.

For more information regarding early career opportunities, please visit HARC's [Early Career Resources page!](#)

Become a HARC Member!



At the heart of HARC's work is our practice-based research network (PBRN). The PBRN is designed to bring together programs and researchers to identify and answer questions that are critical to broaden and strengthen the benefits of home visiting for all families and communities. We invite anyone with an interest in home visiting to join the network! This includes staff at local home visiting programs, such as supervisors, home visitors, data managers, and program leaders. Membership is **FREE** and has several benefits, such as:

- Opportunities to propose or contribute to research of interest to you
- Special Interest Groups to connect with your peers
- Early access to HARC study findings
- Meetings and other networking opportunities

Many voices are needed to ensure that research is relevant and useful. Please forward this newsletter to at least one colleague and encourage them to join HARC's PBRN today! [Join here!](#)

Missed a newsletter? No worries - they're now available on the HARC website along with our monthly literature updates!

Home Visiting Applied Research Collaborative
www.hvresearch.org

Do you have research-related announcements or examples of precision research you'd like to share with the HARC network? If so, we'd love to hear from you! [Guidelines for newsletter submissions can be found on our website](#). If you have any questions, please feel free to send to Diana (dchute1@jhu.edu).



Share This Email



Share This Email



Share This Email

Home Visiting Applied Research Collaborative | 615 N. Wolfe St E4150, Johns Hopkins
Bloomberg School of Public Health,
Baltimore, MD 21205

[Unsubscribe kgonsal1@mail521.jh.edu](mailto:kgonsal1@mail521.jh.edu)

[Update Profile](#) | [Constant Contact Data Notice](#)

Sent by kgonsal1@mail521.jh.edu powered by



Try email marketing for free today!