



# HARC Herald

March 2024 Newsletter



## Table of Contents

- 1.HARC April Webinar
- 2.Webinar Recordings Now Available
- 3.Results from HARC PBRN Studies
- 4.Home Visiting Research Opportunities
- 5.In the News
- 6.Monthly Peer-Reviewed Literature Updates

- 7.Funding Opportunities
- 8.HARC Annual Meeting
- 9.Upcoming Webinars
- 10.Upcoming Conferences
- 11.Early Career Researcher Corner
- 12.Become a HARC member

**Register Now! HARC Webinar on NIH Funding Mechanisms**  
**April 11<sup>th</sup>, 12pm – 1:00pm ET**

## Introduction to NIH Funding Mechanisms for Early Career Scholars

Registration is now open for our April webinar featuring Dr. Nicole Redmond from NHLBI. Dr. Redmond will provide information regarding NIH funding mechanisms. Although the webinar is focused on the needs of early career researchers, all are welcome. Scan the QR code or click the button to register.

[Register Here](#)

**HARC** Home Visiting Applied Research Collaborative

**HARC WEBINAR SERIES**

**Introduction to NIH Funding Mechanisms for Early Career Researchers**

April 11th, 2024      12pm - 1:00pm ET

Join Dr. Nicole Redmond for an interactive introduction to NIH funding mechanisms. She will share:

- The NIH funding process
- Opportunities designed for early career researchers
- Tips to negotiate the process

There will be opportunities for Q&A.

*Register now*

View previous webinars and learn about HARC at [hvresearch.org](http://hvresearch.org)

*Nicole Redmond, MD, PhD, MPH, FACP*  
 Chief, Clinical Applications and Prevention Branch  
 Division of Cardiovascular Sciences  
 National Heart, Lung, and Blood Institute

## HARC's Webinar Recordings are Now Available!

### Check Out HARC's February and March Recordings

HARC has hosted two successful webinars including an early career researcher webinar and an emerging issues webinar for those interested in home visiting. If you were unable to attend

or would like to watch them again, please visit the [HARC webinars page](#).

## Results Now Available from Recent HARC PBRN Studies!

### *Developing Resources to Support Precision Home Visiting Research and Evaluation - Survey Results*

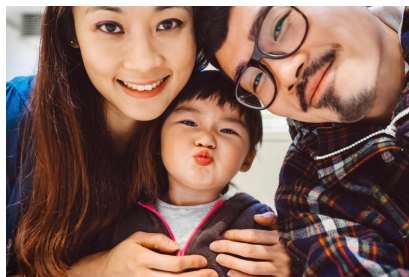
HARC is developing materials to improve understanding and increase the use of the **Precision Paradigm**. This month, we launched a HARCBeat survey to hear from home visiting researchers, evaluators, and technical assistance providers who are members of our Practice Based Research Network so that they could help guide us in creating the most useful materials possible. Results can be found [here](#).

### *Concept Mapping to Engage Individuals with Lived Experience: An Example from Developing a Measure of Reflective supervision in Home Visiting*

The Supporting and Strengthening the Home Visiting Workforce (SAS-HV) project team used HARC's PBRN to recruit and engage local home visiting staff from across the US in a concept mapping activity to identify key elements of reflective supervision. The project team is using the findings to inform the development of a measure of reflective supervision for the visiting context. Learn more [here](#).

As always, HARC would like to extend our sincere thanks to all of the PBRN members who have participated in these activities.

## Home Visiting Research Opportunities



### **Center for Indigenous Research Collaborations and Learning for Home Visiting (CIRCLE-HV)**

**CIRCLE-HV** is currently seeking home visiting programs focused on serving Indigenous communities for the CIRCLE-HV Cross-Site Research Study. The project plans to partner with eight agencies for their help planning a study, coordinating data collection, and sharing findings. Planning and implementation of the study will take place over 3 years. All partner agencies will be compensated for their time. If you are interested to hear more about this opportunity and what participating would look like for your agency, please email the study director, **Erin Geary**. [Deadline is April 15, 2024](#). Of note, CIRCLE-HV is interested in partnering with some programs not funded by Tribal MIECHV, to engage a broad array of approaches to home visiting with Indigenous families.

## Supporting and Strengthening the Home Visiting Workforce (SAS-HV): Informational Webinar (April 2, 12:30-1:00pm)

**SAS-HV** invites all home visiting supervisors, MIECHV leads, model representatives, and home visiting network representatives to join a webinar to learn about efforts to test a measure of reflective supervision for home visiting. The webinar will provide more information about the project and how you can support the recruitment of 500 supervisors to test the measure. **Register today.**

---

### Support the New Workforce Institute

The Health Resources and Services Administration (HRSA) awarded a cooperative agreement to Education Development Center and its partners to lead the **Institute for Home Visiting Workforce Development and Jackie Walorski Center for Evidence-Based Case Management**. The Institute will help home visiting programs across the country improve their workforce by attracting, supporting, and retaining qualified staff from diverse backgrounds. If you're passionate about workforce issues and want to help shape the future of the home visiting field, nominate yourself or others to support the Institute and Center. Email **Christine Zakhour** for more information.

## In the News

### *Helping Families Through the Upheaval: How Home Visiting Programs Supported Families' Economic Well-Being During the COVID-19 Pandemic - OPRE Report 2024-019*

In this **report**, researchers from the Supporting Family Economic Well-being project (HomeEc) sought to understand how home visiting supported family economic well-being during the pandemic. The report highlights findings in two areas 1) families' economic experiences during the COVID-19 pandemic, and 2) home visiting programs' experiences in supporting family economic well-being during the pandemic. This work was designed to provide information that early childhood home visiting programs can use to support families' economic well-being, both during regular operations and if they face other disruptions to service delivery, such as natural disasters.

---

### 2024 National Home Visiting Summit Recordings

The **2024 National Home Visiting Summit** highlighted the progress public sector early childhood systems leaders, particularly at the state level, have made to advance home visiting as part of an equitable, comprehensive early childhood system. The three **plenary session recordings** are now available to watch at no cost. **Additional Summit recordings** are available for \$249 through May 31, 2024.

## Monthly Peer-Reviewed Literature Updates

### Peer-reviewed Literature Updates

Each month, HARC shares recently published peer-reviewed home visiting research articles. Articles are identified via a Google Scholar alert, thus the list may not include all published articles. View the citations and links to open access articles **here**.

# Funding Opportunities

## Maternal, Infant, and Early Childhood Home Visiting Program (MIECHV): Base and Matching Grant Awards

HRSA has announced the opportunity to **apply for base and matching funds** under MIECHV Program. To learn more, including eligibility, visit the HRSA *Find Grant Funding* **website**. Deadline is May 29, 2024.



## Tribal Maternal, Infant, and Early Childhood Home Visiting Program (Tribal MIECHV) Grants

The Office of Early Childhood Development within the Administration for Children and Families (ACF) will be soliciting **applications** for the Fiscal Year 2024 Tribal MIECHV Grant Program. This cooperative agreement between ACF and federally recognized Indian tribes, tribal organizations, or urban Indian organizations includes supporting the implementation of high-quality, culturally grounded, evidence-based home visiting services to American Indian and Alaska Native families and children, implementation of performance measurement and quality improvement systems, and participation in research and evaluation activities to build evidence around home visiting in tribal communities. Deadline is April 18, 2024.

## HARC Annual Meeting - Save the Date!



### 9TH ANNUAL MEETING SAVE THE DATE

September 17-18, 2024  
Johns Hopkins University Bloomberg Center  
555 Pennsylvania Ave. Washington DC

DETAILS TO COME

[www.hvresearch.org](http://www.hvresearch.org)



HARC's annual meeting will be held in Washington, DC Sept 17-18<sup>th</sup>, 2024.

More details will be coming soon!

## Upcoming Webinars

### Networking for NiTR Early Career Members Webinar (April 5, 2024, 2pm-3:30pm)

This webinar provides a unique networking opportunity to connect with mentors across the early childhood care field, both in academic and non-academic careers. You will have an opportunity to meet 5 different mentors in various careers in an intimate breakout room to network and learn about their career paths. Mentors include Jenessa Malin (government, Office for Planning, Research, and Evaluation), Sarah Crowne (Child Trends), Jessica Sager (All our Kin), Zac Price (academia), and Brenda Jones Harden (academia). **Register today.**



## Society for Research in Child Development's (SRCD) 3-Part Policy Webinar Series (April 2, 2024, 12pm-1:00pm ET)

**Registration** is open for the first of a 3-part policy webinar series, *How to Build Relationships with Policymakers*, hosted by SRCD. In this series, SRCD will showcase different types of policymakers, reveal how each policy audience uses and thinks about evidence, provide examples of strong research-to-policy partnerships, and connect attendees with the policy world.

## Child and Family Data Archive's Early Head Start Family and Child Experiences Survey (Baby FACES 2022) Webinar (April 17, 2024, 1pm-2:00pm ET)

In this webinar, attendees will learn about accessing and using data from the Baby FACES 2022 data including data collection and measures, data files and data user resources, considerations when using the data, and accessing the data. **Register today!**

## Upcoming Conferences

### Society for Prevention Research (SPR) 2024 Annual Meeting (May 28-31, 2024, in Washington, DC)

**Early-bird registration** is now open for SPR's annual meeting entitled, *Advancing Partnerships and Collaborative Approaches in Prevention Science*. This meeting provides an opportunity to advance this vision by providing a centrally integrated forum for the exchange of new concepts, methods, and results from prevention research and related public health fields.

### Research and Evaluation Conference on Self-Sufficiency (RECS) 2024 Meeting (May 29-31, 2024, in Washington, DC)

**Registration** is now open for the 2024 RECS meeting for both in-person and virtual attendees. RECS is a forum for researchers, state and local administrators, practitioners, federal officials, and policy makers to discuss cutting-edge research on human programs, policies, and services that support families on the path to economic self-sufficiency.



### The Administration for Children and Families' National Research Conference on Early Childhood (June 24-26, 2024, in Arlington, VA)

**Registration** is now open for the 2024 NRCEC conference. This three-day conference will present the latest research on Head Start, Early Head Start, child care, home visiting, child welfare, special education, pre-kindergarten, early elementary, and other early childhood programs.

## American Public Health Association (APHA) 2024 Annual Meeting and Expo (October 27-30, 2024, in Minneapolis, MN)

This year's APHA meeting theme is *Rebuilding Trust in Public Health and Science* including current and emerging issues in public health. Each year this meeting provides high-quality, science-based education, engaging networking opportunities, and cutting-edge resources to thousands of public health professionals across the nation.

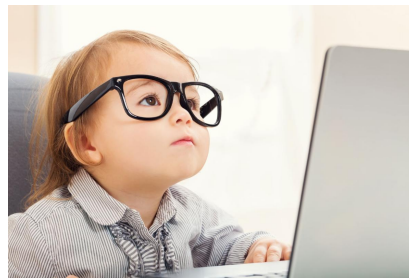
**Registration** for the 2024 APHA annual meeting will open in June.

## Society for Social Work and Research (SSWR) Annual Conference (January 15-19, 2025, in Seattle, WA)

**Abstract submissions** are now being accepted for SSWR's **annual conference** entitled, *Strengthening Social Impact through Collaborative Research*. SSWR's annual conference offers a scientific program that reflects a variety of research interests including workshops on the latest research methodologies to sessions on research priorities and capacity building that target cutting-edge topics vital to contemporary social work research. Deadline is April 15, 2024.

**For more information on upcoming conferences, please visit HARC's Upcoming Conferences and Webinars page!**

## Early Career Researcher Corner



## Society for Research in Child Development's (SRCD) Student and Early Career Council Dissertation Award Announcement

The Student and Early Career Council of SRCD has announced its **annual competition** for graduate student dissertation research funding. These non-renewable awards of up to \$2,000 will be awarded to doctoral students for dissertation research proposals. These proposals should display strong potential to contribute to the field of child development. Deadline is May 1, 2024.

**For more information regarding early career opportunities, please visit HARC's Early Career Resources page!**

## Become a HARC Member!

At the heart of HARC's work is our practice-based research network (PBRN). The PBRN is designed to bring together programs and researchers to identify and answer questions that are critical to broaden and strengthen the benefits of home visiting for all families and communities. We invite anyone with an interest in home visiting to join the network! This includes staff at local home visiting programs, such as supervisors, home visitors, data managers, and program leaders.

Membership is **FREE** and has several benefits, such as:

- Opportunities to propose or contribute to research of interest to you
- Special Interest Groups to connect with your peers
- Early access to HARC study findings
- Meetings and other networking opportunities
- This newsletter

Many voices are needed to ensure that research is relevant and useful. Please forward this newsletter to at least one colleague and encourage them to join HARC's PBRN today! **Join here!**

***Missed a newsletter? No worries - they're now available on the HARC website along with our monthly literature updates!***

## Home Visiting Applied Research Collaborative

[www.hvresearch.org](http://www.hvresearch.org)

*Do you have research-related announcements or examples of precision research you'd like to share with the HARC network? If so, we'd love to hear from you! **Guidelines for newsletter submissions can be found on our website.** If you have any questions, please feel free to send to Diana ([dchute1@jhu.edu](mailto:dchute1@jhu.edu)).*

*HARC is housed at the Bloomberg School of Public Health at Johns Hopkins University. HARC is supported by the Health Resources and Services Administration (HRSA) of the U.S. Department of Health and Human Services (HHS) under cooperative agreement UD5MC30792, Maternal, Infant and Early Childhood Home Visiting Research and Development Platform. This information or content and conclusions are those of the author and should not be construed as the official position or policy of, nor should any endorsements be inferred by HRSA, HHS or the U.S. Government.*



Share This Email



Share This Email



Share This Email

Home Visiting Applied Research Collaborative | 615 N. Wolfe St E4150, Johns Hopkins  
Bloomberg School of Public Health,  
Baltimore, MD 21205

[Unsubscribe kgonsal1@mail521.jh.edu](mailto:kgonsal1@mail521.jh.edu)

[Update Profile](#) | [Constant Contact Data Notice](#)

Sent by kgonsal1@mail521.jh.edu powered by



Try email marketing for free today!