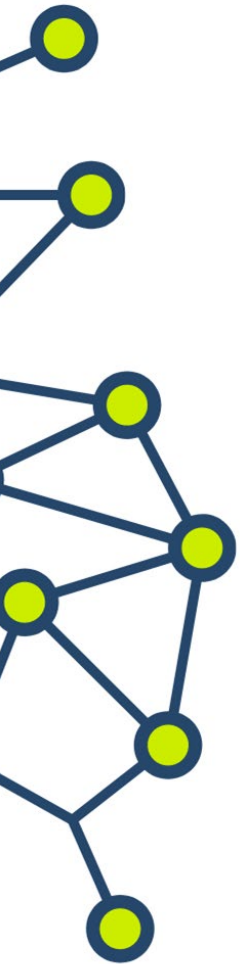


Measuring Success in Research-Practice Partnerships

HARC Annual Meeting
September 18, 2024

Paula Arce-Trigatti

National Network of Education
Research-Practice Partnerships
(NNERPP)



Paula Arce-Trigatti, Ph.D.

Director

National Network of Education Research-
Practice Partnerships (NNERPP)

Kinder Institute for Urban Research

Rice University

parcetrig@rice.edu

NNERPP is made possible through generous funding support from the Bill and Melinda Gates Foundation, William T. Grant Foundation, Annie E. Casey Foundation, and The Wallace Foundation

NNERPP Member Map



NNERPP Mission

- NNERPP is a professional learning community that connects its members and the education field with resources and supports to strengthen research-practice partnerships so that they may successfully pursue their goals.

Total # of Members

- 74

States with the most NNERPP members

- California (13)
- Texas (5)
- Illinois (4)

What are we doing here today?

We hope to....

- facilitate opportunities to learn collaboratively
- surface cool insights from our shared experiences
- make a new friend or connect with an existing one
- have fun!





Proposed Journey

- Introductory matter
 - What is an RPP?
 - How do we measure RPP “success”?

How might research inform decision -making?

Suggested Community Norms



Stories stay in,
learning goes out

Assume positive intent

Be open to possibilities

Invite and welcome the
contributions of all

Cultivate discomfort

Stay present

Engage in
community care

Find a friend and ponder together...



What's the most important thing to **you** when describing the “success” of a collaboration?

Introductory Matter

WHAT IS AN RPP?

Farrell, Penuel, Coburn, Daniel, and Steup (2021)

A long-term collaboration aimed at educational improvement and equitable transformation through engagement with research. These partnerships are intentionally organized to connect diverse forms of expertise and shift power relations in the research endeavor to ensure that all partners have a say in the joint work.

KEY ELEMENTS

A **long-term collaboration** aimed at **educational improvement** or **equitable transformation** through **engagement with research**.

These partnerships are intentionally organized to connect **diverse forms of expertise** and **shift power relations** in the research endeavor to ensure that all partners have a say in the **joint work**.

WHAT IS IN THE “CORE DNA” OF AN RPP?

- Long-term collaboration
- Educational improvement (or) equitable transformation
- Engagement with research
- Diverse forms of expertise
- Shift in power relations
- Joint work

WHAT DOES THIS LOOK LIKE IN REAL LIFE?



Long-term collaboration

UChicago Consortium has been around since 1990...



Educational improvement (or) equitable transformation

So much variety here...



Engagement with research

Co-development + co-generation + use of research



Diverse forms of expertise

Research + practice + policy + community + ...?



Shift in power relations

How might we disrupt?



Joint work

The core of "RPP-ing"

What does it mean to measure “success” of an RPP?

Indicators of Research-Practice Partnership Health and Effectiveness

Updating the Five Dimensions Framework

Erin Henrick

Vanderbilt University

Caitlin C. Farrell

University of Colorado Boulder

Corinne Singleton

University of Colorado Boulder

Alison Fox Resnick

University of Colorado Boulder

William R. Penuel

University of Colorado Boulder

Paula Arce-Trigatti

Rice University

Danny Schmidt

Partner to Improve

Stacey Sexton

Sagefox Consulting Group

Kristina Stamatis

University of Nebraska

Sarah Wellberg

University of Colorado Boulder



National Center for Research
in Policy and Practice

NNERPP
NATIONAL NETWORK OF EDUCATORS
RESEARCH-PRACTICE PARTNERSHIPS



Dimension 1:
Cultivate trust and relationships

Dimension 2:
Engage in inclusive research or inquiry to address local needs

Dimension 3:
Support practice or community organization in making progress on its goals

Dimension 4:
Engage with the broader field to improve educational practices, systems, and inquiry

Dimension 5:
Foster ongoing learning and develop infrastructure for partnering

5 Dimensions of RPP Effectiveness

Same QR code
from previous
slide!



Find a friend and ponder together...



Going back to the collaborative example you thought of earlier, do any of these dimensions speak to you? Which one(s)?

How might we support use of research?

Dimension 1:
Cultivate trust and relationships

Dimension 2:
Engage in inclusive research or inquiry to address local needs

Dimension 3:
Support practice or community organization in making progress on its goals

Dimension 4:
Engage with the broader field to improve educational practices, systems, and inquiry

Dimension 5:
Foster ongoing learning and develop infrastructure for partnering

This one is really about making sure the research is actionable, relevant, and timely...

Dimension 1:
Cultivate trust and relationships

Dimension 2:
Engage in inclusive research or inquiry to address local needs

Dimension 3:
Support practice or community organization in making progress on its goals

Engage with the broader field of practice, systems, and inquiry

Foster ongoing learning and a culture for partnering



INDICATOR 3E:

**INFORM DECISION
MAKING WITH IDEAS
FROM RESEARCH:**

Partners engage the larger practice or community organization in research or inquiry results such that results can inform decision-making alongside other considerations like practical realities and constraints, values, or existing policies.

Find a friend and ponder together...



- Given your experience, what gets in the way of research use?
- What is one thing you would change if you had a magic wand?

Here is how NNERPP might respond to this...

Not involving the users of the research in the production and generation of it!

Ensure that research generation involves collaboration of diverse perspectives

- **Given your experience, what gets in the way of research use?**
- **What is one thing you would change if you had a magic wand?**

**What is one thing you are leaving
with today that you will take
back home?**



**slido.com
#2091742**