



# HARC Herald

November 2024 Newsletter



## Happy Thanksgiving!

HARC is so grateful for our members, advisors, and collaborators who work so hard to broaden and strengthen home visiting's benefits for all families and communities! Wishing you good food that fills your table, good health, and good times with family and friends. Happy Thanksgiving!

## Table of Contents

- |   |                               |
|---|-------------------------------|
| 1. Hot Off the Press                        | 6. External Job Postings      |
| 2. HARC Annual Meeting Recordings           | 7. Early Career Opportunities |
| 3. Propose a Study                          | 8. Share Your Voice           |
| 4. Resources from the Field                 | 9. Upcoming Conferences       |
| 5. Monthly Peer-reviewed Literature Updates | 10. Become a HARC Member      |

## Hot Off the Press! Recent Work by HARC PBRN Members!

### ***Developing a Coaching Manual to Provide Human Support for the Mothers and Babies Online (eMB) Perinatal Mental Health Intervention***

This month, HARC Leadership Team member, Darius Tandon, and colleagues published results from their **study** employing user-centered design methods in the development of a coaching manual for home visitors to implement the Mothers and Babies Online Course (eMB), a self-guided online intervention for perinatal depression and stress. Findings revealed that parents and home visitors agreed that adding adjunctive coaching for eMB would be beneficial. Moreover, this study showcases the significance of engaging end users in intervention design.

### ***Exploring Effects of Ethnoracial and Linguistic Match Between Children and Home Visitors on Family Retention***

This month, HARC members You Zhou, Patricia Manz, Abigail Ross and colleagues reported findings from their **study** exploring the extent to which matching an ethnoracial and/or linguistic

characteristics among home visiting-child dyads is associated with retention outcomes among families participating in ParentChild+. Findings suggest that linguistic and ethnracial matches between home visitors and families might be a strategy for long-term retention in early childhood home visiting programs.

## Recordings from 2024 HARC Meeting Now Available!

Slides and recordings from the 2024 HARC meeting are **now available!** Follow the link to learn more about strategies for engaging community in research.

## Propose a Study!

### How to Propose a Study for HARC's Practice-based Research Network (PBRN)

All HARC members can propose studies that leverage the power of HARC's **practice-based research network** (PBRN). The PBRN facilitates gathering perspectives of from local home visiting programs across the US. We recently updated our proposal submission guidelines. To learn more, see the ***Propose a Study*** page on the HARC website.



## Resources from the Field

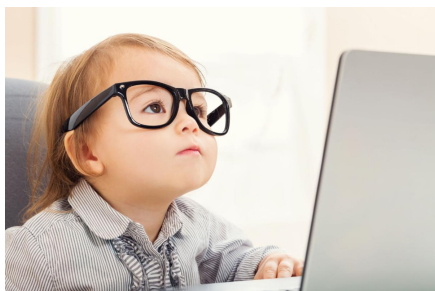
### Robert Wood Johnson Foundation's Unscripted: Candid Conversations about the Future of Research

What could the future of research look like and how do we get there? Get inspired by this five part **series** where six visionary scholars engage in conversation that challenge us to rethink the way society produces, collects, shares, and uses knowledge about health.

### Home Visiting in Action Podcast - *Prioritizing Joy as a Staff Retention Strategy*

Supporting the home visiting workforce is critical. In this **podcast**, representatives from the MIECHV awardee in Virginia discuss how they lead a Continuous Quality Improvement (CQI) project focused on increasing “joy in work” among the state’s home visiting workforce.

## Monthly Peer-Reviewed Literature Updates



### Peer-reviewed Literature Updates

Each month, HARC shares recently published peer-reviewed home visiting research articles. Articles are identified via a Google Scholar alert, thus the list may not include all published articles. View the citations and links to open access articles **[here](#)**.

## External Job Postings

## Assistant Scientist - Johns Hopkins Bloomberg School of Public Health

The Bloomberg School of Public Health, Department of Population, Family, and Reproductive Health is seeking an **Assistant Scientist**. The successful applicant will support an innovative community-partnered, applied research portfolio addressing case management, service coordination, and/or workforce development in US domestic maternal, infant, and early childhood home visiting programs and systems that serve families with young children. Applicants must hold a doctorate in public health, social work, psychology, or a related field and have services research experience and excellent writing skills.

---

## Work with the Office of Research, Planning and Evaluation (OPRE)!

Jefferson Consulting Group, an OPRE contractor, is seeking candidates for a contract Social Science Research Analyst position supporting OPRE's Division of Family Strengthening. This position will support federal staff and will carry out responsibilities related to supporting research and evaluation activities related to human services programs. **Apply today.**

## Don't Miss Out! Early Career Researcher Opportunities!

### Applications Are Open for the 2025-2026 Society for Research in Child Development (SRCD) U.S. Policy Fellowship Program

Are you a postdoctoral scholar with child development expertise and an interest in policy? If so, SRCD is now accepting **applications** for their 2025-2026 SRCD U.S. Policy Fellowship Program. Fellows will be immersed in policy for one to two years in a state, federal agency, or in Congress and will receive a competitive stipend and significant development support. Deadline is January 6, 2025.

---



### HARC's Early Career Researchers Webinar Recording is Now Available

Recordings are now available for anyone who missed HARC's early career researcher **webinar** entitled *Professional Development for Early Career Home Visiting Researchers*. In this webinar, Brenda Jones Harden and Jon Korfmacher discuss strategies for finding mentors, developing a personal research agenda and monitoring time.

## Share Your Voice! Current Research Opportunities

### Participate in Research on Home Visiting Implementation Quality!

Three studies examining aspects of a **conceptual framework for implementation quality** are currently underway for the Home Visiting Assessments of Implementation Quality (HV-AIM)

project. The studies focus on (1) addressing disparities, (2) family voice and leadership, and (3) supervision. *You can find more information and complete surveys for all three studies at [this link](#)*. Email Sarah Crowne ([scrowne@childtrends.org](mailto:scrowne@childtrends.org)) with general questions.

---

## Calling for Individuals Interested in Home Visiting Workforce Development!

The **Institute for Home Visiting Workforce Development** wants to learn from home visiting professionals to inform research and evaluation efforts! They are looking for up to 25 home visiting staff and individuals that support home visiting staff (such as supervisors, program managers/directors, state, territory, and Tribal home visiting leads, technical assistance and professional development providers, researchers and evaluators) to inform research and evaluation efforts focused on strengthening systems of support for the home visiting workforce. If you have worked in home visiting for at least one year, you are eligible to participate in the workgroup. Deadline to complete a brief interest **form** is December 16, 2025.

---

## Investigating Strategies to Improve Head Start Educator Compensation Project – Call for Information

The Investigating Strategies to Improve Head Start Educator Compensation Project is searching for resources, documents, and information on compensation strategies in Head Start/Early Head Start that have been published since 2019.

**Visit** the Office of Research, Planning and Evaluation (OPRE) to learn more.



## Upcoming Conferences

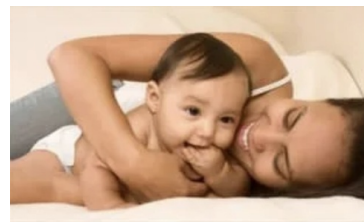
### **Society for Social Work and Research (SSWR) Annual Conference (January 15-19, 2025, in Seattle, WA)**

**Early bird registration** closes on December 2, 2024 for SSWR's **annual conference** entitled, *Strengthening Social Impact through Collaborative Research*. SSWR's annual conference offers a scientific program that reflects a variety of research interests including workshops on the latest research methodologies to sessions on research priorities and capacity building that target cutting-edge topics vital to contemporary social work research.

### **National Home Visiting Summit (February 12-14, 2025, in Washington, DC)**

**Early bird registration** closes on December 2, 2024 for the 2025 **National Home Visiting Summit** which aims to integrate policy, practice, and research to influence systems change to advance equitable and quality home visiting services, structures, and systems. View the **2025 Agenda** to help plan your trip to Washington, DC!

## Association of Maternal and Child Health Programs (AMCHP) Conference (March 15-18, 2025, in Washington, DC)



**Early bird registration** closes on January 17, 2025 for the **AMCHP Annual Conference**. Each year, this conference aims to highlight maternal and child health (MCH) programs' impact at all levels on women, children and families and to provide attendees with the tools and resources to develop, enhance, and sustain vital MCH programs and services.

## 24th National Conference on Child Abuse and Neglect (April 1-3, 2025, in Rockville, MD)

Save the date for the **24<sup>th</sup> National Conference on Child Abuse and Neglect (NCCAN)**, sponsored by the Children's Bureau. Innovative sessions will focus on developing ideas-to-action strategies that provide opportunities to exchange ideas and learn what works from community members and peers.

## Society for Research in Child Development (SRCD) Biennial Meeting (May 1-3, 2025, in Minneapolis, MN)

SRCD continues its commitment to highlight cutting-edge research, policy, and practice in child development. The **2025 meeting** will highlight developmental science broadly, a diversity of programs, increased emphasis on scholar-activism and more.

**For more information on upcoming conferences, please visit [HARC's Upcoming Conferences and Webinars page!](#)**

**Become a HARC Member!**

# Join HARC's Practice-Based Research Network (PBRN)

## Why Join?



### Share Your Voice

HARC brings together home visiting staff, network leaders, model representatives, families and researchers to identify and answer important research questions. This research can help strengthen the benefits of home visiting for all families.



### Make an Impact

Home visiting research needs your voice in order to support innovative practice. Join HARC to create research that can improve home visiting practice and policy!



### Get Connected

Connect with peers, learn about new research studies, join a special interest group, and stay informed about home visiting with the HARC monthly newsletter!

#### OUR MISSION

The Home Visiting Applied Research Collaborative is a national research and development platform for innovation to broaden and strengthen home visiting's benefits for all families and communities.

[hvresearch.org](http://hvresearch.org)



Join the Network Today

PS: It's FREE!



***Missed a newsletter? No worries - they're now available on the HARC website along with our monthly literature updates!***

## Home Visiting Applied Research Collaborative

[www.hvresearch.org](http://www.hvresearch.org)

*Do you have research-related announcements or examples of precision research you'd like to share with the HARC network? If so, we'd love to hear from you! [Guidelines for newsletter submissions can be found on our website](#). If you have any questions, please feel free to send to Diana ([dchute1@jhu.edu](mailto:dchute1@jhu.edu)).*

*HARC is housed at the Bloomberg School of Public Health at Johns Hopkins University. HARC is supported by the Health Resources and Services Administration (HRSA) of the U.S. Department of Health and Human Services (HHS) under cooperative agreement UD5MC30792, Maternal, Infant and Early Childhood Home Visiting Research and Development Platform. This information or content and conclusions are those of the author and should not be construed as the official position or policy of, nor should any endorsements be inferred by HRSA, HHS or the U.S. Government.*



Share This Email



Share This Email



Share This Email



Try email marketing for free today!