



# HARC Herald

March 2026 Newsletter



## Table of Contents

- |                                     |                                     |
|-------------------------------------|-------------------------------------|
| 1. National Home Visiting Week      | 7. Monthly Peer-Reviewed Literature |
| 2. Research Snapshot                | 8. Upcoming Webinar                 |
| 3. HARC Webinar Series              | 9. Call for Conference Presentation |
| 4. Call for HARC Webinar Presenters | 10. Upcoming Conferences            |
| 5. Hot Off the Press                | 11. Join HARC                       |
| 6. Research Resources               |                                     |

## Celebrating National Home Visiting Week (April 20-24)

Home visiting staff are essential partners for families with young children, providing support, guidance, and links to community resources. During **National Home Visiting Week** (April 20–24) we celebrate their dedication to the families they serve and their role in research that advances the field. Through our practice-based research network, HARC uses home visiting perspectives to guide practice relevant work. Below is a brief selection of recent HARC projects involving home visitors. For more resources, please visit HARC's [resource library](#).

# Snapshot of HARC Products Informed by Home Visitor Perspectives

## *The Use of Artificial Intelligence in Home Visiting Service Delivery*

- 1 Survey of home visiting staff about their familiarity with AI, frequency of use, and views. Most staff were familiar and used AI occasionally. Common uses were generating ideas and writing reports; top concerns were inaccurate information and privacy.

## *Ongoing and Emerging Issues in Home Visiting*

- 2 Survey of home visiting interest groups to identify the field's greatest concerns. Three top-identified priorities were: (1) supporting families who lack adequate community resources; (2) securing reliable funding; and (3) boosting family engagement and retention.

## *Voices from the Field: Exploring Contextual Factors in Home Visiting Practice*

- 3 Qualitative study of home visitors and the contextual factors shaping their work. The findings showed how context affects home visitors, families, and program outcomes, and highlight the need to consider a range of contextual factors in home visiting research.

## *Equalizing the Playing Field: Home Visiting's Role in Linking Families to Economic Supports*

- 4 Survey of home visitors' familiarity with public benefits and their experiences helping families access them. Findings showed that home visitors' knowledge of public benefits varies widely, yet they believe discussing benefits with families is important and helpful.

## HARC Happenings

## Research Snapshot

### *The Use of Artificial Intelligence (AI) in Home Visiting Service Delivery*

In fall 2025, 234 home visiting staff responded to a HARC survey about their familiarity with and use of AI in home visiting services. Most staff were at least familiar with AI, with the majority using it occasionally. Respondents reported using AI to generate ideas and write reports. Nearly half of the respondents expressed interest in AI training, so HARC plans to explore how to develop and share resources around this topic. Visit this [infographic](#) for more details.

## HARC's Webinar Series



## HARC WEBINAR SERIES

### Partnership-Engaged Research to Advance Home Visiting: Iowa's Integrated Data System Approach

April 2, 2026

12pm - 1pm ET



**Heather Rouse**  
**Iowa State**  
**University**

This webinar will summarize the history and developmental milestones in the creation of Iowa's Integrated Data System for Decision-Making (I2D2). I2D2 is a collaboration among health, human services, education, and workforce agencies with university partners to use administrative data for population-wide needs assessments, strategic planning, and ongoing program evaluation. Dr. Rouse will share foundational experiences comprising the development of the state-university partnership, key elements of the governance and technology solutions within I2D2, and specific uses of the system to advance home visiting programming statewide.

[Register Here](#)

Visit our [webinar page](#) to learn about upcoming sessions and access recorded webinars.

## Call for HARC Webinar Presenters

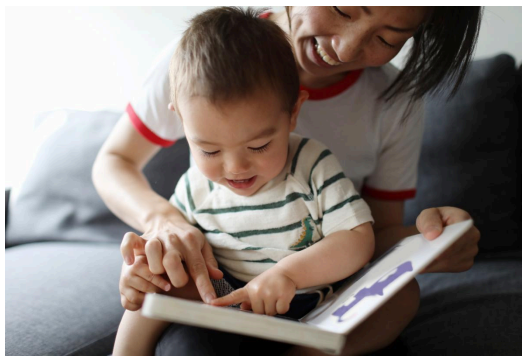
HARC is seeking research or evaluation teams to present findings in an upcoming interactive webinar series on three field-identified emerging or ongoing issues, including 1) supporting families without community resources, 2) funding, and 3) family engagement and retention. If you are interested in presenting your work, please complete this brief interest [form](#).

## HARC's Home Visiting Journal Club

This month's journal club featured a discussion of a formative evaluation report by Chapin Hall, "[Home Visiting with Families Experiencing Homelessness](#)." Co-led by Jenna Stoughtenger, one of our [Research Discovery Scholars](#), we had rich large and small group conversations about the qualitative study, its findings, and implications. Interested in future meetings? Visit our [home visiting journal club page](#) to register. All are welcome — no research experience required!

## Hot of the Press!

### Recent Work by HARC and its Members!



## ***Preventing Adverse Childhood Experiences: A Framework for Culturally Responsive Home Visitation***

HARC member Julianne Ballard and colleagues published a critical narrative **review** examining how 13 evidence-based home visiting models address prevention of intergenerational adverse childhood experiences (ACEs). Results showed that models drew on 10 theories, most emphasizing behavioral correction. ACEs measurement was uncommon, and cultural responsiveness varied widely. Findings suggested a potential gap between home visitation frameworks and the factors that shape ACEs exposure and prevention. The authors propose a framework to inform research, practice, and policy for preventing intergenerational ACEs.

## ***Promoting Early Relational Health and Resilience in Pediatric Primary Care: A Qualitative Study***

HARC members Elizabeth Miller, Daniel Shaw, and colleagues published their **study** exploring parents' perceptions of how two Early Relational Health (ERH) interventions—PlayReadVIP and Smart Beginnings (SB), which includes home visiting for high risk families—support parenting. Caregiver interviews revealed four themes: caregivers valued learning foundational parenting practices; became more child-centered; felt increased self-efficacy and empowerment; and identified PlayReadVIP and SB as sources of support. These findings can inform and strengthen pediatric primary care parenting programs and guide feasibility, acceptability, and scaling of evidence-based, layered ERH programs.

## ***Overview of Case Management in Home Visiting***

The Jackie Walorski Center for Evidence-Based Case Management has released a research-to-practice **brief** that serves as a foundational guide to case management in home visiting. Developed by several HARC members including Allison West and Ciara Spinosa, the brief offers a field-informed definition of case management, outlines six evidence-informed core components, and explains the system levels that shape how programs connect families to services. This is the first in a series of briefs providing resources to help state, territorial, tribal, and local home visiting programs better connect families to needed services.

## **Resources to Support Community Engaged Research**

Interested in community-engaged research to boost study quality, relevance, and advance precision home visiting? Below are two recent resources, including one from HARC, that offer practical guidance on partnering with communities throughout the research process.

## **Toolkit for Engaging Partners in Precision Home Visiting Research**



This **toolkit**, developed by HARC, outlines how to engage key interest groups throughout a research project and provides several activities including, 1) defining engagement goals; 2) planning for engagement; 3) maintaining engagement; and 4) evaluating engagement.

## **Guide to Participatory, Community-Engaged Evaluation: Moving from Principles to Practice**

This **guide** outlines principles and practices for participatory, community engaged evaluation and highlights key considerations for child welfare contexts to help evaluation teams make intentional, evidence-based decisions.

## **Monthly Peer-Reviewed Literature Updates**

### **Peer-Reviewed Literature Updates**

Each month, HARC shares recently published peer-reviewed home visiting research articles. Articles are identified via a Google Scholar alert, thus the list may not include all published articles. View the citations and links to open access articles [here](#).

## **Upcoming Webinar**

### **Introducing the National Strategy for the Home Visiting Workforce (Online Event: April 15 at 3pm ET)**

HRSA and its Institute for Home Visiting Workforce Development invite you to **register** today to join them on April 15 for the exciting online launch of the new *National Strategy for the Home Visiting Workforce*. Decades of research show that home visiting transforms families' lives. During the launch, you'll learn how the National Strategy will guide knowledge development to inform the development of pathways to home visiting careers, strengthen the workforce, and support workforce well-being—positioning this vital workforce for even greater success, reach, and impact.

## **Call for Conference Presentation**

### **Society for Social Work Research 2027 Annual Conference (January 20-24, San Francisco, CA)**

The SSWR Annual Conference is the premier international forum for advancing rigorous social work research and translating evidence into policy and practice to strengthen communities and promotes the common good. They especially encourage **submissions** that reflect varied perspectives, interdisciplinary approaches, and research that addresses pressing social challenges. Deadline is April 15, 2026.



# Save the Date

## HARC's 10<sup>th</sup> Annual Collaborative Science of Home Visiting Meeting

September 28, 2026  
Baltimore, MD

---

This meeting will take place the afternoon prior to the 2026 National Home Visiting Summit.



### **Conference on Intervention Optimization: Science and Practice, Present and Future (May 18-20, 2026, Bethesda, MD)**

**Registration** is open for the **2026 Conference on Intervention Optimization** in Bethesda, MD. The inaugural conference will convene scholars across health, education, behavioral science, and engineering to establish intervention optimization as a multidisciplinary field and spark collaboration. The program will feature plenary sessions on new experimental designs, implementation science, computer science applications, and decision-making, alongside poster sessions and networking opportunities.

### **Research and Evaluation Conference on Self-Sufficiency (RECS) (May 20-22, 2026, Washington, D.C. and virtual)**

**Registration** is now open for the **2026 Research and Evaluation Conference on Self-Sufficiency**. Join researchers, policymakers, and practitioners to explore the latest findings on programs and policies that support family economic self-sufficiency. Topics include employment, financial literacy, housing, health, education, and more. Select sessions will also be available virtually.

### **Society for Prevention Research Annual Conference (May 26-29, 2026, Washington, D.C. and virtual)**

Mark your calendar for the **2026 Society for Prevention Research conference**. Join leading prevention scientists, policymakers, and practitioners to explore cutting-edge research, innovative methodologies, and strategies for implementing evidence-based prevention interventions across public health sectors.



## Administration for Children and Families' (ACF) National Research Conference on Early Childhood (NRCEC) 2026 (June 22-24, 2026, Arlington, VA)

**Registration** is now open for the **NRCEC 2026**. This conference will showcase the latest research on early childhood programs that support young children and their families.

## American Psychological Association Convention (August 6-8, 2026, Washington, D.C. and virtual)

Mark your calendar for the **2026 American Psychological Association Convention**. This event unites psychologists who are shaping the future of research and offers a chance to network, collaborate, and advance together in the field.

## National Home Visiting Summit (September 29-30, 2026, Baltimore, MD)

**Registration** is open for the **2026 National Home Visiting Summit**. The Summit is designed to provide a multi-pronged, holistic approach to systems change by incorporating policy, practice and research and connecting home visiting to other components of the early childhood system.

## Parents as Teachers International Conference (Oct 5-8, 2026, Portland, OR)

Save the date for the **2026 Parents as Teachers International Conference**. Get connected and be inspired in the home visiting field through workshops, keynotes, and networking.

## Zero to Three Learn Conference (Oct 27-29, 2026, Portland, OR)

**Registration** is now open for the **2026 ZERO TO THREE LEARN Conference**. The goal of this conference is to transform early childhood concepts into action, theories into skills, and shared passion into positive energy that propels the field forward. This conference is a great way to learn from experts in the field, build networks, and connect with friends.

**For more information on upcoming conferences, please visit HARC's [Upcoming Conferences page!](#)**

**Join HARC!**

# Join HARC's Practice-Based Research Network (PBRN)

## Why Join?



### Share Your Voice

HARC brings together home visiting staff, network leaders, model representatives, families and researchers to identify and answer important research questions. This research can help strengthen the benefits of home visiting for all families.



### Make an Impact

Home visiting research needs your voice in order to support innovative practice. Join HARC to create research that can improve home visiting practice and policy!



### Get Connected

Connect with peers, learn about new research studies, join a special interest group, and stay informed about home visiting with the HARC monthly newsletter!

#### OUR MISSION

The Home Visiting Applied Research Collaborative is a national research and development platform for innovation to broaden and strengthen home visiting's benefits for all families and communities.

[hvresearch.org](http://hvresearch.org)



**Join the Network Today**

PS: It's FREE!



***Missed a newsletter? No worries - they're now available on the HARC website along with our monthly literature updates!***

## Home Visiting Applied Research Collaborative

[www.hvresearch.org](http://www.hvresearch.org)

*Do you have research-related announcements or examples of precision research you'd like to share with the HARC network? If so, we'd love to hear from you! [Guidelines for newsletter submissions can be found on our website](#). If you have any questions, please feel free to send to Diana ([dchute1@jhu.edu](mailto:dchute1@jhu.edu)).*

*HARC is housed at the Bloomberg School of Public Health at Johns Hopkins University. HARC is supported by the Health Resources and Services Administration (HRSA) of the U.S. Department of Health and Human Services (HHS) under cooperative agreement UD5MC30792, Maternal, Infant and Early Childhood Home Visiting Research and Development Platform. This information or content and conclusions are those of the author and should not be construed as the official position or policy of, nor should any endorsements be inferred by HRSA, HHS or the U.S. Government.*



[in](#) Share This Email



Try email marketing for free today!